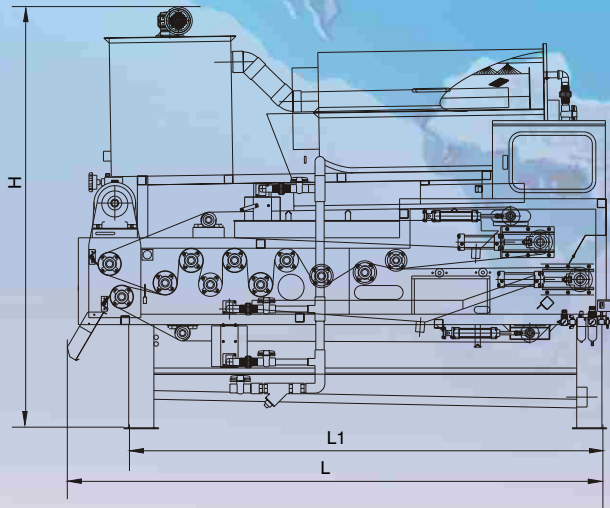
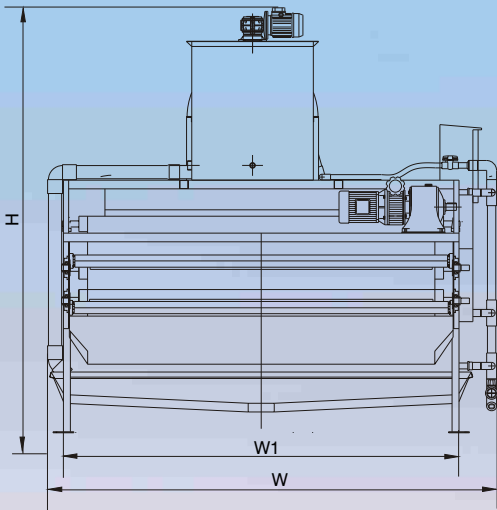




ATB Series



ATB series external dimensions of belt presses

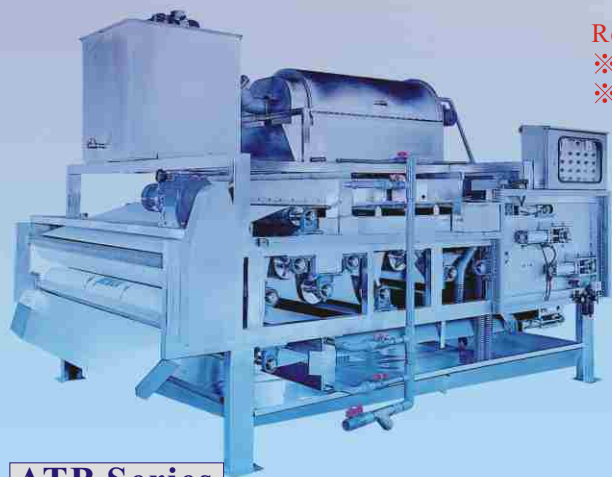
Model	External Dimensions (Reference) (m/m)			Reference Weight (kgs)
	L	W	H	
ATB-500	2600	1050	2500	780
ATB-750	2600	1300	2500	930
ATB-1000	2600	1550	2500	1130
ATB-1250	2600	1800	2500	1430
ATB-1500	2700	2100	2500	1700
ATB-1500L	3200	2150	2500	2100
ATB-2000	3300	2700	2600	2700

ATB series technical data of belt presses

Model	Machine Frame Material	Structure Type	Cloth Width (mm)	(SS 1.0 ~2.5%) Treating Capacity (depends on sludge feature) (SS 1.0 ~2.5%)		Power Consumption (Hp)							Lower Collecting Tray for Pressed Filtrate	Water Content's Rate (depends on sludge feature)
						Standard Accessories Motor Power(Hp)				Option Accessories Motor Power(Hp)				
				Wet Sludge (M ³ /hr)	Dried Sludge (Kg.ds/hr)	Driving Motor (Speed Variable)	Disposal Agitator Motor	Mud/Water Separator	Washing Pump (Fixed type) 60Hz (50)Hz	Wahing Pump (Reciprocating Type)	Transmission Motor (Reciprocating Type)	Air-Compressor		
ATB-500	SUS304	Frame w/ Side plate	500	1.0~3.0	10~75	1/2	1/4	1/4	2 (3)	3	1/4x2	1/2	Yes	68~85
ATB-750	SUS304	Frame w/ Side plate	750	2.0~4.5	20~113	1/2	1/4	1/4	2 (3)	3	1/4x2	1/2	Yes	68~85
ATB-1000	SUS304	Frame w/ Side plate	1000	3.0~6.0	30~150	1/2	1/4	1/4	3 (3)	5+1	1/4x2	1/2	Yes	68~85
ATB-1250	SUS304 or S20C	Frame w/ Side plate	1250	4.0~7.5	40~188	1/2	1/4	1/4	3 (3)	5+1	1/4x2	1/2	Yes	68~85
ATA-1500	SUS304 or S20C	Frame w/ Side plate	1500	5.0~9.0	50~225	1/2	1/2	1/4	3 (7 1/2)	5+1	1/4x2	1/2	Yes	68~85
ATB-1500L	SUS304 or S20C	Frame w/ Side plate	1500	6.5~12	65~300	1	3/4	1/2	3 (7 1/2)	5+1	1/4x2	1/2	Yes	68~85
ATB-2000	SUS304 or S20C	Frame w/ Side plate	2000	9.0~16.5	90~413	1	3/4	1/2	7 1/2 (71/2)	5+1	1/2x2	1/2	No	68~85

Remark:

- ※The manufacture will reserve the right of the above specification.
- ※For example: ATB-1000G is high-pressure reciprocating type belt press.



ATB Series